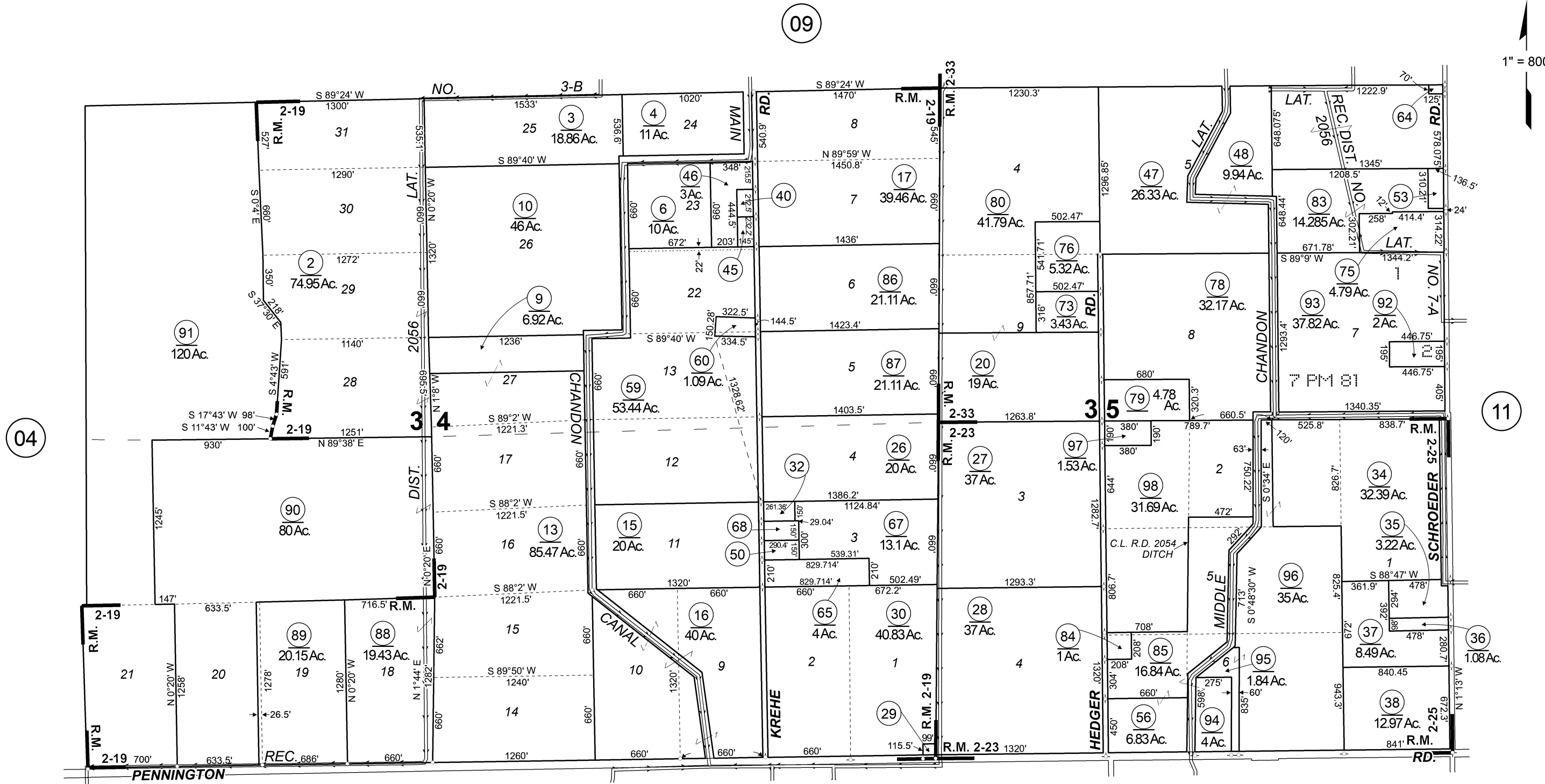


1" = 800'



04

09

11

24

San Francisco Call Colony No. 1 R.M. Bk. 2, Pg. 19  
 Live Oak Colony No. 3 R.M. Bk. 2, Pg. 23  
 Live Oak Colony No. 9 R.M. Bk. 2, Pg. 33

Assessor's Map Bk. 8 - Pg. 10  
 County of Sutter, Calif.  
 2021

ASSESSOR PARCELS SHOWN ON THIS PAGE  
 DO NOT NECESSARILY CONSTITUTE LEGAL LOTS.  
 CHECK WITH THE COUNTY SURVEYOR OR  
 PLANNING DIVISION TO VERIFY.

Note - Assessor's Block Numbers & Lot Numbers Shown in Circles